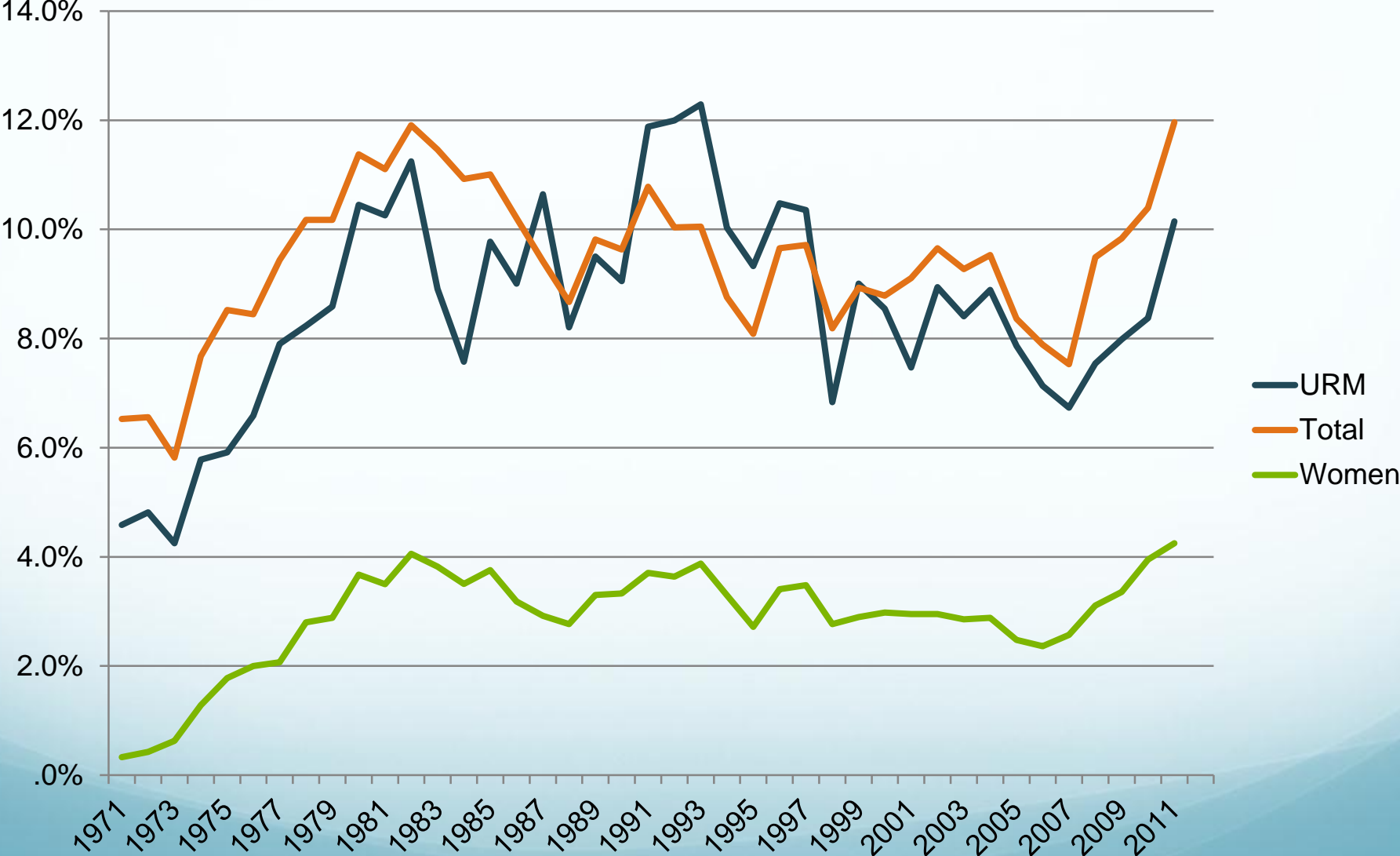
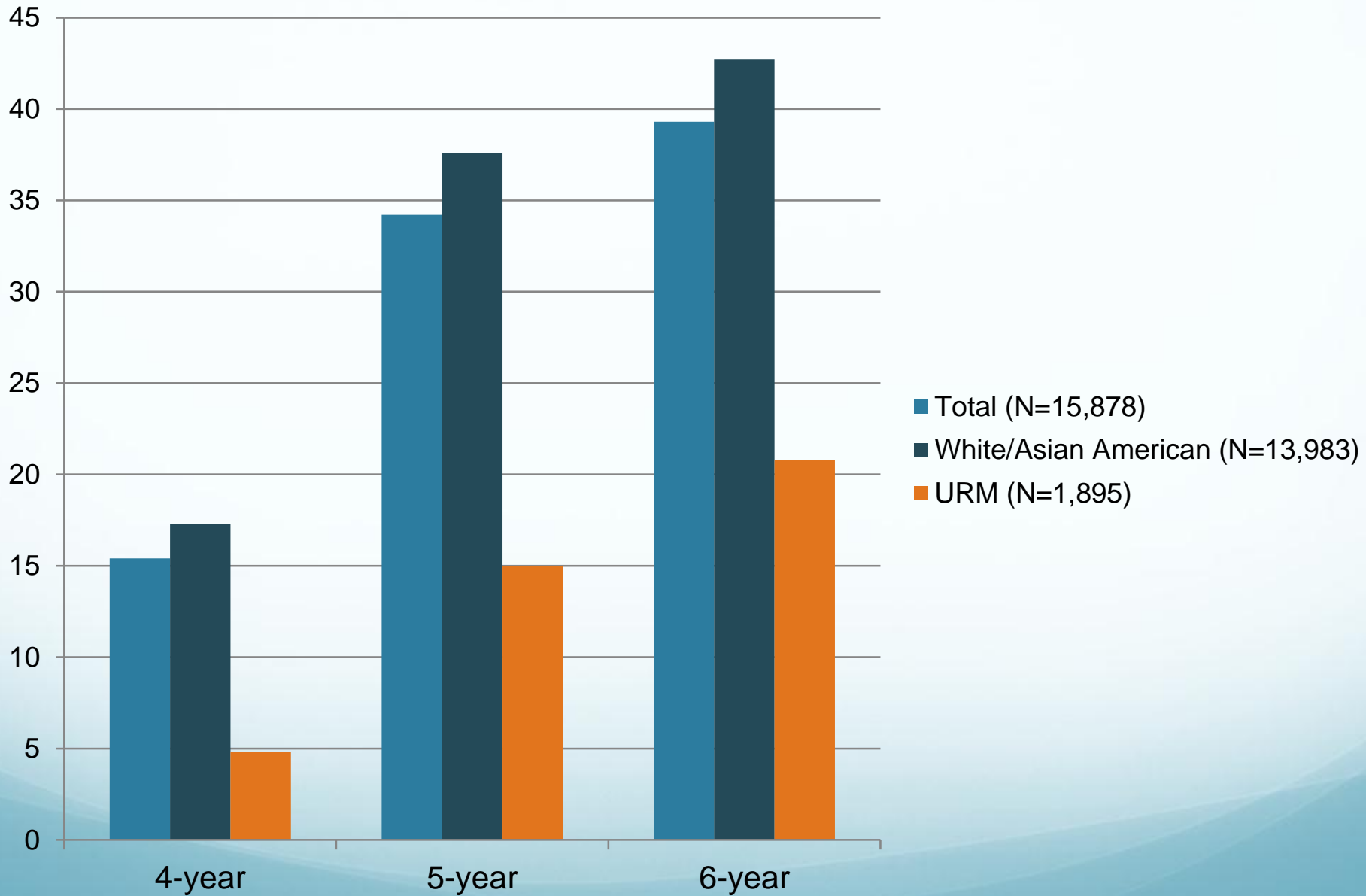


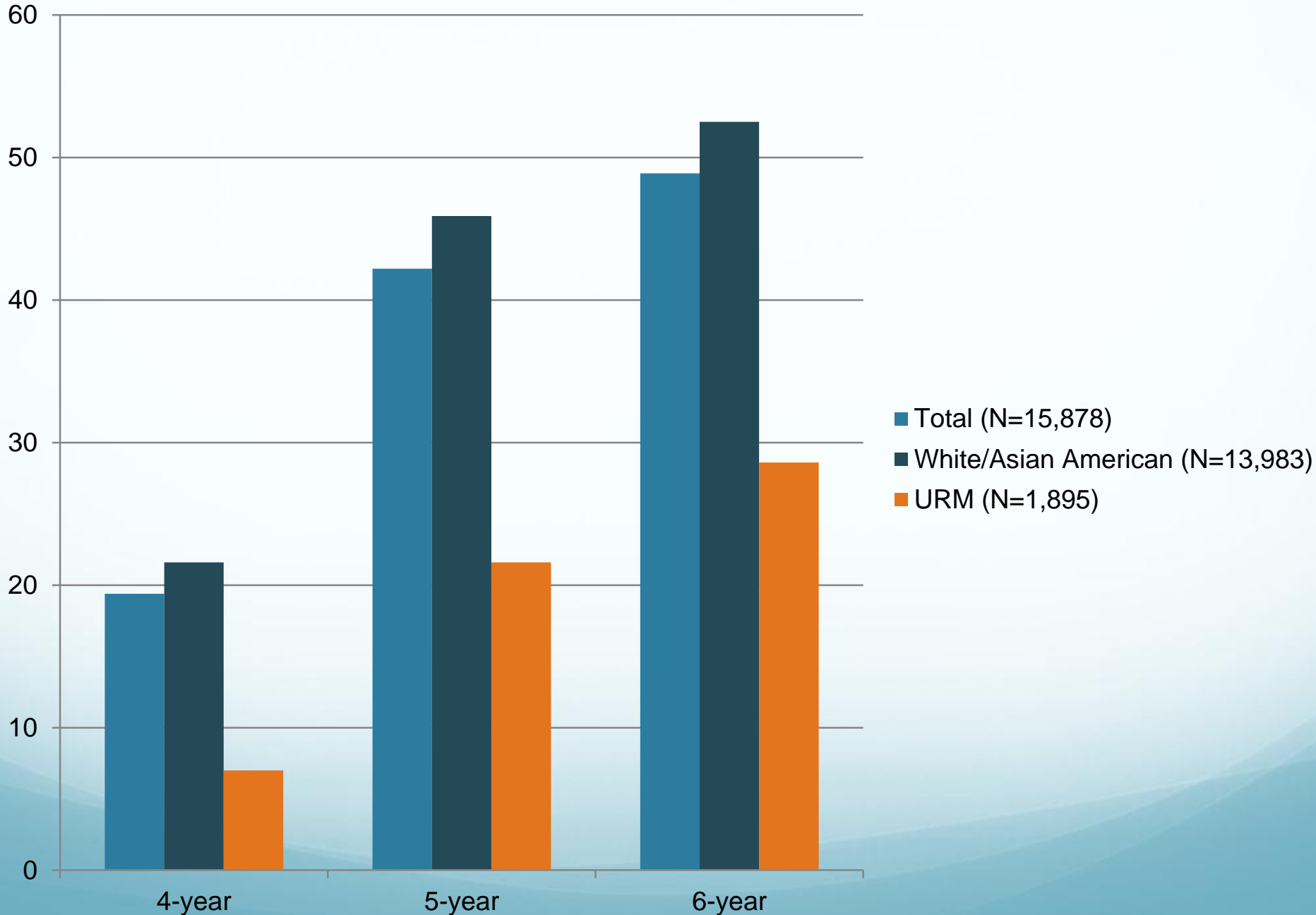
Percent of Entering First-Time, Full-Time Freshman Intending to Major in Engineering, 1971-2011



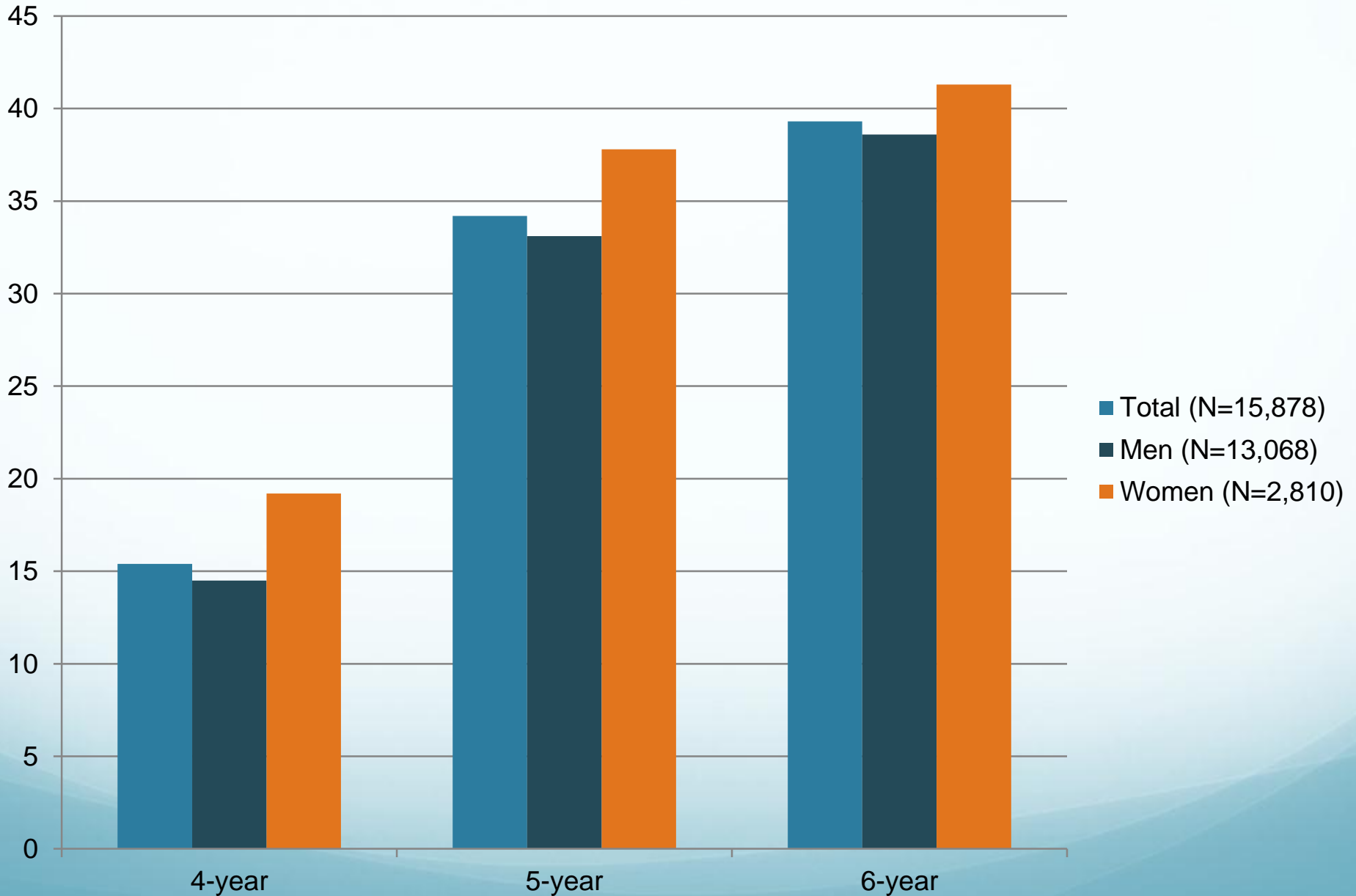
Engineering Completion Rates among Engineering Aspirants, by Race



STEM Completion Rates among Engineering Aspirants, by Race



Engineering Completion Rates among Engineering Aspirants, by Gender



Resources

Higher Education Research Institute

BEST project (sponsored by NSF and NIH) on STEM
undergraduates and graduates

www.heri.ucla.edu/nih