

INTENTIONALLY INCREASING DIVERSITY

UNIVERSITY OF PORTLAND

SHILEY SCHOOL OF ENGINEERING

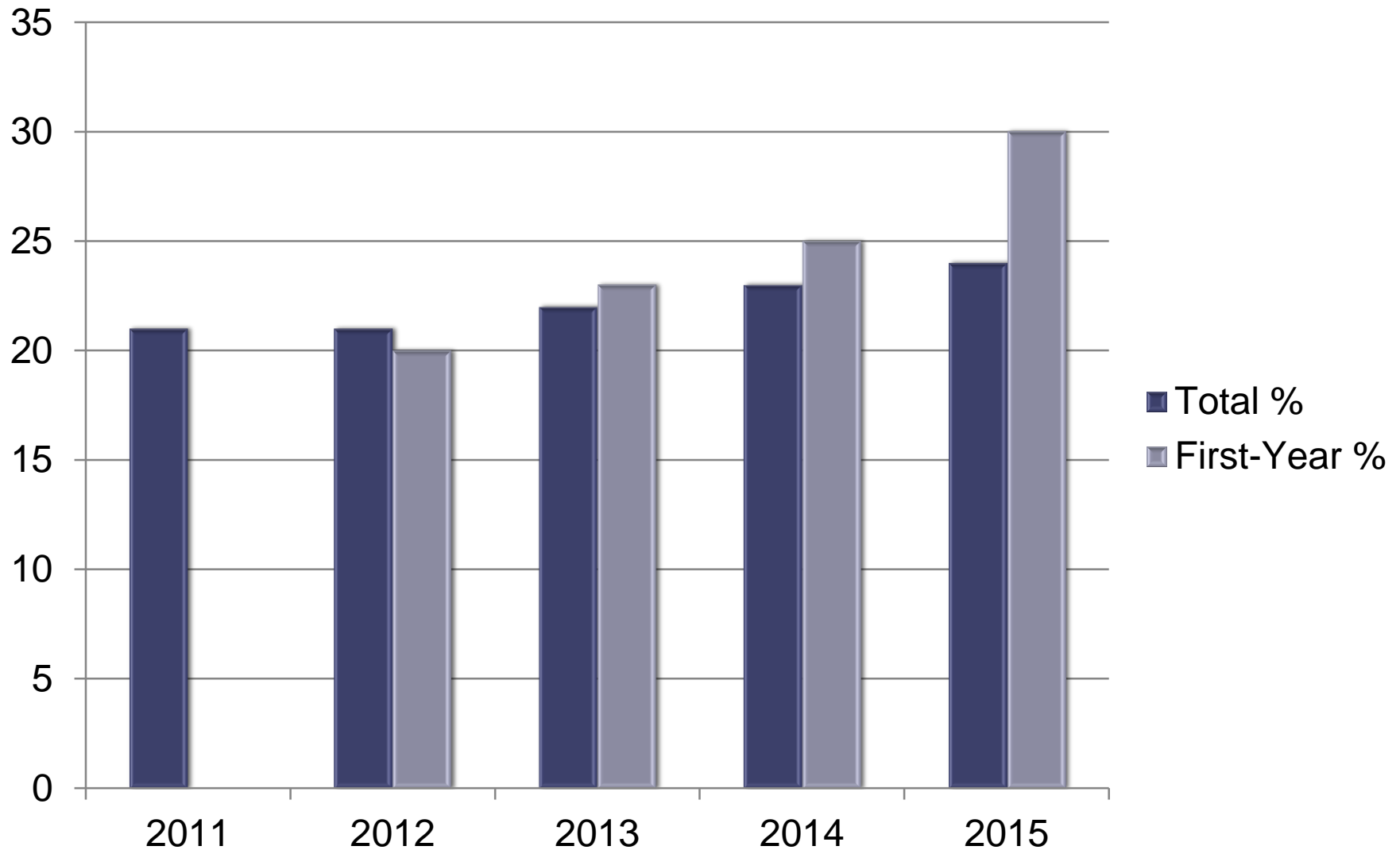
MARCH 31ST 2016



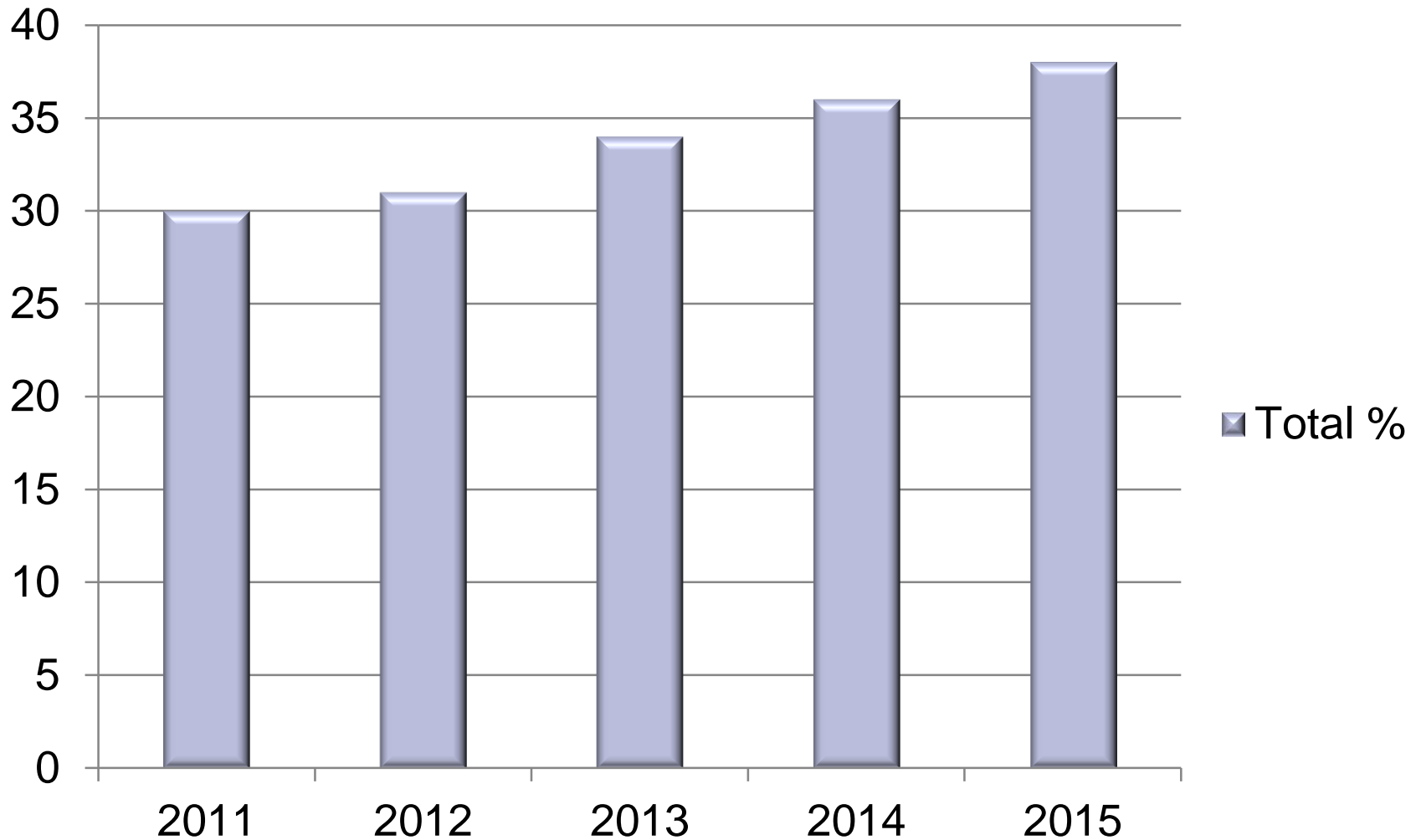
Quick overview ...

- **Private comprehensive Catholic university**
- **Approx. 97% of students on financial aid guaranteed for 8 semesters**
- **4-year graduation expected**
- **720 engineering undergraduates & growing**
 - 75% increase in last decade
 - 18% increase in last 5 years
- **4 majors in the School of Engineering:**
 - civil engineering
 - computer science
 - electrical engineering
 - mechanical engineering

students compared to 10-year average of 21%



Steady increase: % of URM students compared to 10-year average of 18%



...

- **Curricular & co-curricular changes**
 - from 0 to 3 unrestricted electives
 - study abroad programs within a 4-year graduation plan
 - from competitive to cooperative first-year design project focused on assistive design technologies
 - multi-disciplinary senior design capstone option for all majors
 - ethics across the curriculum
 - extremely strong SWE student chapter
- **Retention program for “at-risk” students**
 - any first- or second-year student in good academic standing, but behind cohort ... typically starting in pre-calculus
 - > 50% of “at-risk” students URM
 - intentional AY counseling
 - summer bridges to “catch-up” with cohort ... pre-1st year and pre-2nd year

Initial results from retention program are +

