



SSMart Success!

David Roland Finley, Ph.D., P.E. – Dean, Business & Engineering

Actually, we have a continuum...

- Engineering
 - Complex Analysis, Complex Design, Development
- Industrial Engineering/Operations Management
- Engineering Economics/Quantitative Analysis
- Business
 - Finance, Accounting, Management, Marketing

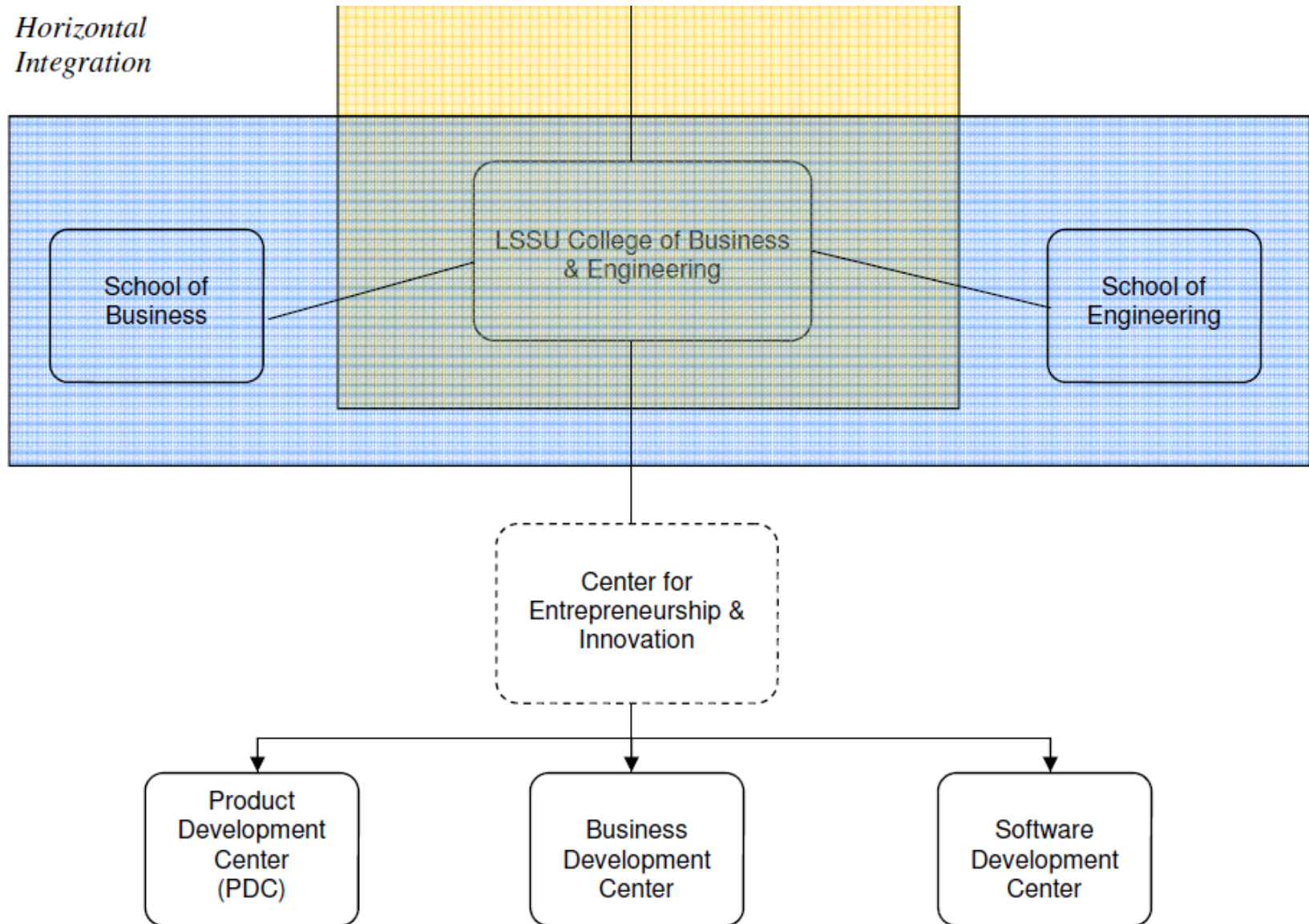
***New* College of Business and Engineering**

- Lukenda School of Business
- School of Engineering & Tech (Robotics Lab)
- Product Dev Center/Business Dev Center
- strongly linked to SmartZone (SSMart)





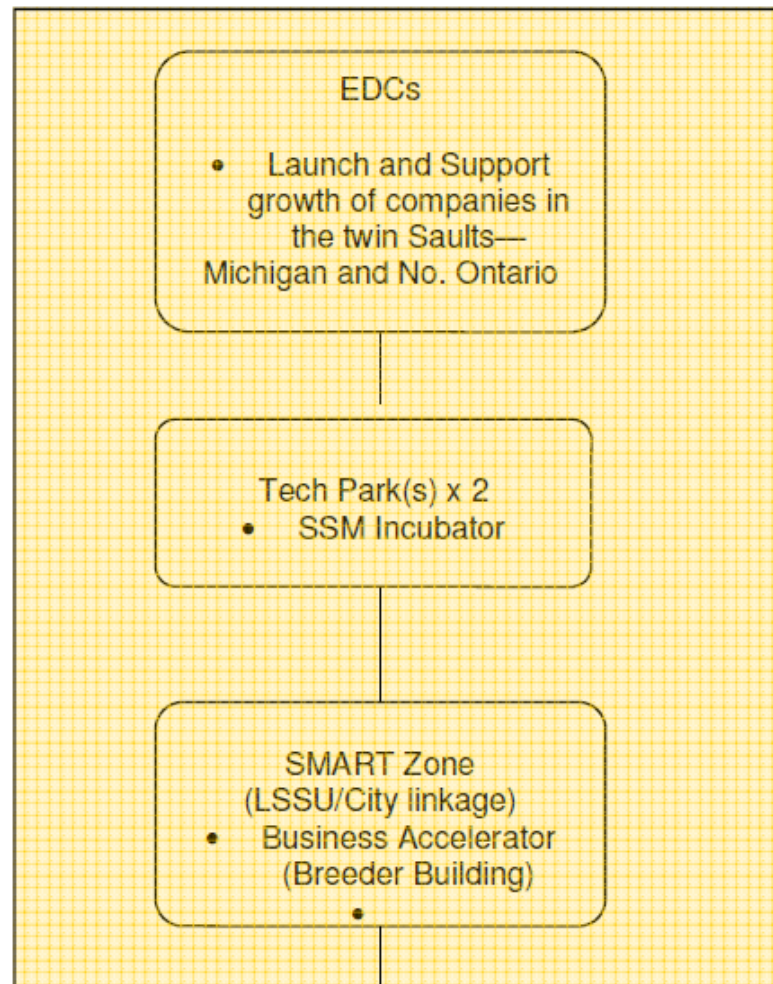
*Horizontal
Integration*





ENTREPRENEURSHIP at Lake Superior State University

*Vertical
Integration*



Horizontal



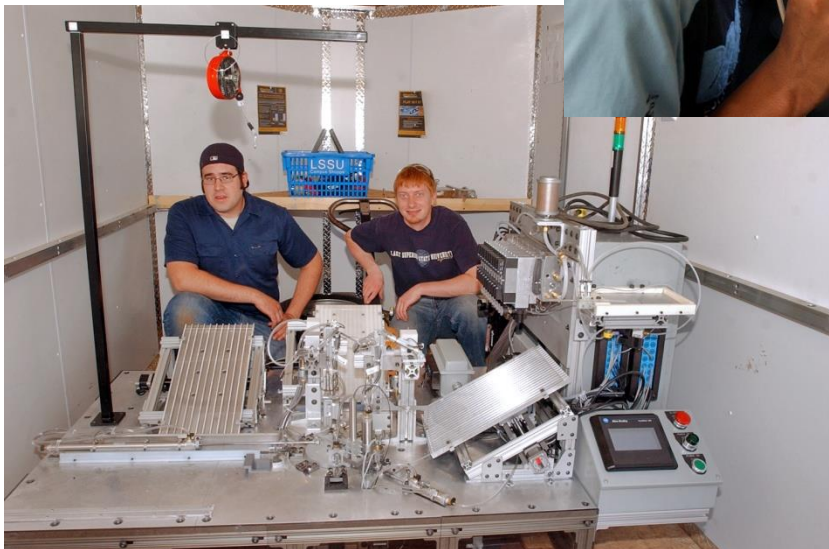
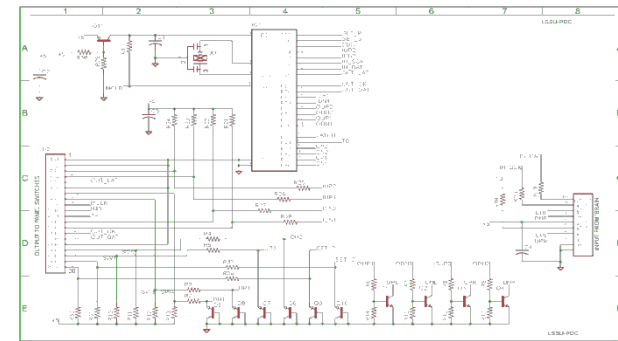
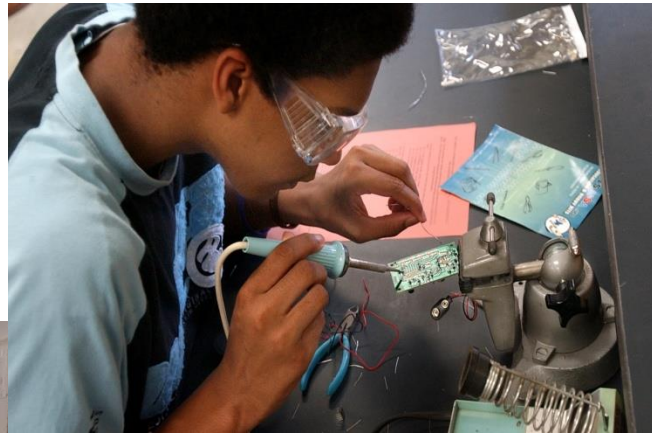
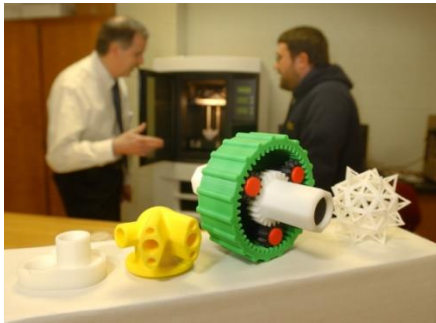
Product Development Center

- November 2007 Launch
- First in the State!
- MEDC 21st Century Jobs Fund Grant
- Active Membership with MIIE/MUCI
- Grant -funded Expansion to include Business
- SmartZone





Product Development Center





IDI
ARCHITECTURE
ENGINEERING
CONSULTING



Technology Business Accelerator

*-City/LSSU
partnership*



SENATOR LEVIN PAYS A VISIT – Aug. 2013

ROOM TO GROW AND SHOW – the new SmartZone building promotes collaborations between universities, industry, research orgs, government, and other institutions to establish technology-based businesses and jobs



LAKE SUPERIOR
STATE UNIVERSITY

South Hall Renovation Project



12/21/2015

www.lssu.edu

10



Thank you

dfinley@lssu.edu