

The nexus of Soft Power, Theater Security Cooperation & Engineering Education

James K. Ligh, PE

For the
American Society for Engineering
Education – 2012 EDI
Kauai, Hawai'i

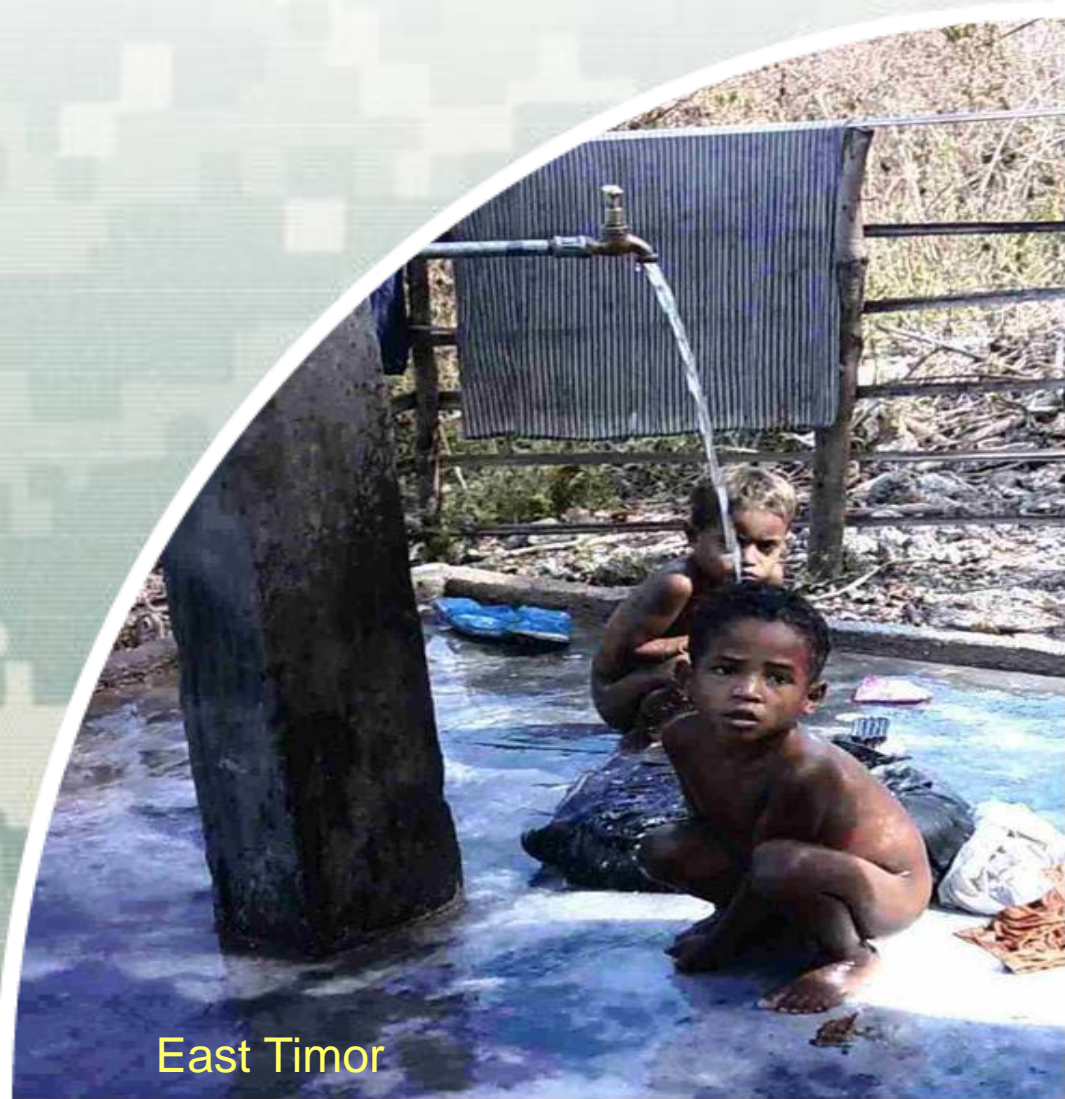
17 Apr 2012



(RBM/Version 3, Jan 2012)

®

US Army Corps of Engineers
BUILDING STRONG®



East Timor

Soft Power

❑ Prevent, Deter, Win

- 3-D (Defense, Diplomacy, Development)
- “Whole of Government” approach
- Phase zero
- Effects based
- Why?

❑ Water & Environmental Security

- Food, health, energy nexus

❑ HA/DR (Humanitarian Assistance/Disaster Relief)

- Common ground
- DOD unique capabilities

❑ Asia Pacific focus

- Sustainability (i.e., water)
- Climate challenges (e.g., sea rise on Island Nations, coastal protection, flood risk, glacier melt, etc)
- Natural vulnerabilities (e.g., tsunami, earthquakes, hurricanes, etc)
- Basin Development (e.g., Mekong)



BUILDING STRONG®

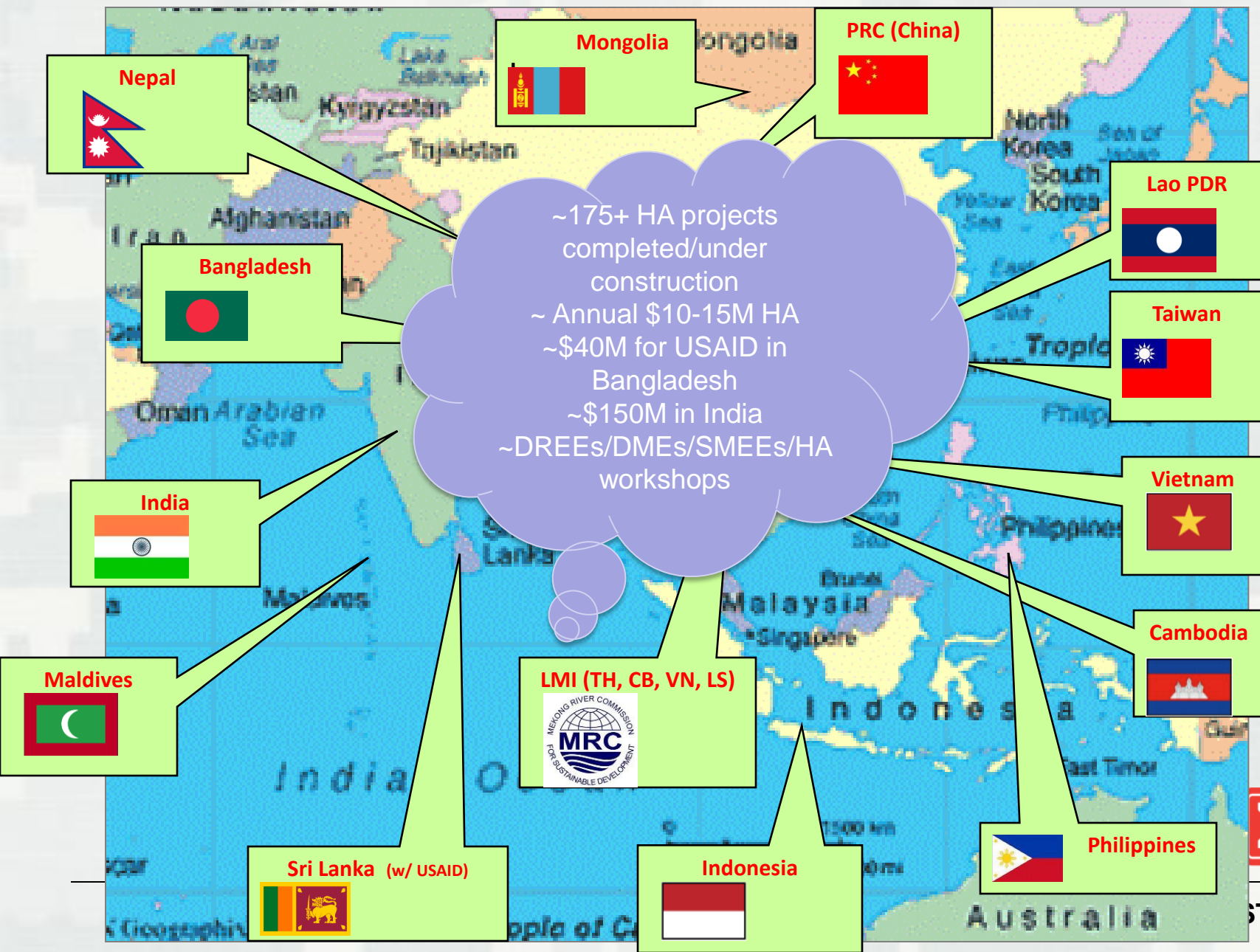
Theater Security Cooperation

“Tool Box”

- ❑ Humanitarian Assistance (HA) Projects
- ❑ International Capacity Development
 - Technical/SME assistance in Water (food & energy nexus) & Environmental Security, Master Planning
- ❑ Disaster Risk Management
 - Disaster Response Exercises & Exchanges (DREE) & Disaster Management Exchanges (DME)
- ❑ Engineering & construction management



Theater Security Cooperation Efforts



Humanitarian Assistance Projects - Clinics



Lao PDR



Attapeu Medical Clinic



Vietnam



Binh Lu Medical Clinic



BUILDING STRONG®

Humanitarian Assistance Projects- Schools



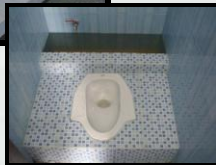
Vietnam



Ky Son Primary School



Lao PDR



Boulapha Primary School



BUILDING STRONG®

Humanitarian Assistance Projects- Schools



Cambodia



**Rokarpopram Primary
School**



Sri Lanka



**Pulipanjakal School
Repairs**



BUILDING STRONG®

Humanitarian Assistance Projects - Shelters & Emergency Ops Centers



Bangladesh



Cyclone Shelter & School



Vietnam



**Tam Ky Flood Management
Operations Center**



BUILDING STRONG®

Humanitarian Assistance Projects - Improved Roads & Bridges



Philippines



Before



06-08 Three Southern Philippines
Road Repair Contracts in
Conflict Areas



Cambodia

Before



Provide farmers road access during
rainy season



Khvet Farm Road (3 Km)
with Drainage
Culverts (approx 1m fill)



Bangladesh



Before



2000 people daily use, school access-- 2 km
around when it collapsed

New bridges at
Asalot Ward &
Kalapara Upizilla &
Barisal Districts

4 New Bridges (50m x 4m)



BUILDING STRONG®

Humanitarian Assistance Projects – Water Supply



East Timor



12 Community Distribution Taps



Overnight Storage tanks



Community Toilets



Before

- ▶ No direct source of water for entire village
- ▶ Potable water primarily from carrying water jugs about 1-2 miles up mountain from a natural spring
- ▶ Provided 12 community water taps & toilets,



BUILDING STRONG®

Facilities



MONGOLIA

Five Hills Training Center

- Barracks and Dining facility
- Medical Clinic and Gym
- Utilities upgrade
- HQ Bldg Renovation



Ribbon Cutting Ceremony
of Classroom #3 & CPX FAC



Medical Clinic



Dining Facility



Classrooms



Command Post Exercise Room



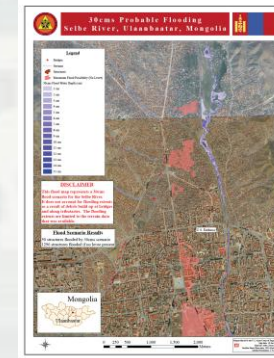
BUILDING STRONG®

International Capacity Development



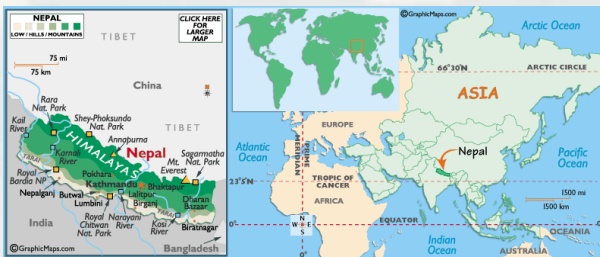
Mongolia

- GIS and Hydrologic & Hydraulic modeling Workshops with USAID & HEC for ~2.8 km Selbe River embankment FC improvements



Nepal

- Seismic Vulnerability & Inspection Workshop
- Airfield & bridge seismic evaluation & assessment
- Airfield runway physical assessment



BUILDING STRONG®

Disaster Risk Management

Disaster Response Exercise and Exchanges (DREEs) and Disaster Management Exchanges (DMEs)

- DREEs

- Bangladesh



- Indonesia



- Nepal



- Vietnam (w/LMC*)



Typical Scenarios:

- Earthquakes
- Flooding
- Tsunamis
- Pandemic

- Disaster Management Exchanges

- Peoples Republic of China



- Taiwan



*LMC = Lower Mekong Countries (i.e., Thailand, Cambodia, Lao, Burma, Vietnam)

Technical Assistance- Lower Mekong Initiative (LMI)



■ DOS initiative



- Mekong River Commission-Mississippi River Commission Sister partnership
- MRC-USACE 5 yr Collaboration Plan
 - Technical workshops
 - Technical collaborations
 - SME exchanges



BUILDING STRONG®

Engineering Education

- ❑ Ability to connect the dots (outside your functional area)
- ❑ Knowledge versus data points
 - Understanding vs “Google” searches
- ❑ Verbal and writing skills
 - Ability to communicate complexity into simple terms what is the problem, potential course of actions (pros & cons), and the recommended solutions to decision makers.
- ❑ Capstone courses (putting it all together)
- ❑ Pentathlete
 - Technical expert, diplomat, facilitator, communicator, visionary



Summary

❑ Engineering skills/competencies vital for soft power

- Technical expertise (glue) to Connect the dots
 - 3-D (Defense, Diplomacy, Development)
 - “Whole of government” approach
- Effects based (watch out for unintended consequences)

❑ Capacity development

- Engineering skills!
- Water, food, health, energynexus
- Sustainable solutions: life-cycle management
- “Green” facilities: environmentally sensitive ->compliant
- Its about people!

❑ Engineering education

- Balance sound technical skills with soft skills
- Global perspective (move from strategic to tactical and back)
- Pentathelete (good at many skills)



Questions



BUILDING STRONG®

Connecting the “dots”



BUILDING STRONG®